



# GOVERNANCE MODELS

---

DMAG SUBGROUP EVALUATIONS

August 8,  
2016

# GOVERNANCE MODELS

---

DMAG SUBGROUP EVALUATIONS

**Initial discussions only!**

**NEED:**

**Legal consultation**

**Labor contracts consultation**

**HR consultation**


**Finance & tax consultation**

**ETC.**

Clear distinction between  
*governance model & delivery model*

Creativity yields options!





Clear distinction between  
*governance model & delivery model*

## Governance Models evaluated

Current governance model

Fire Authority

Skagit County Department

Public Safety

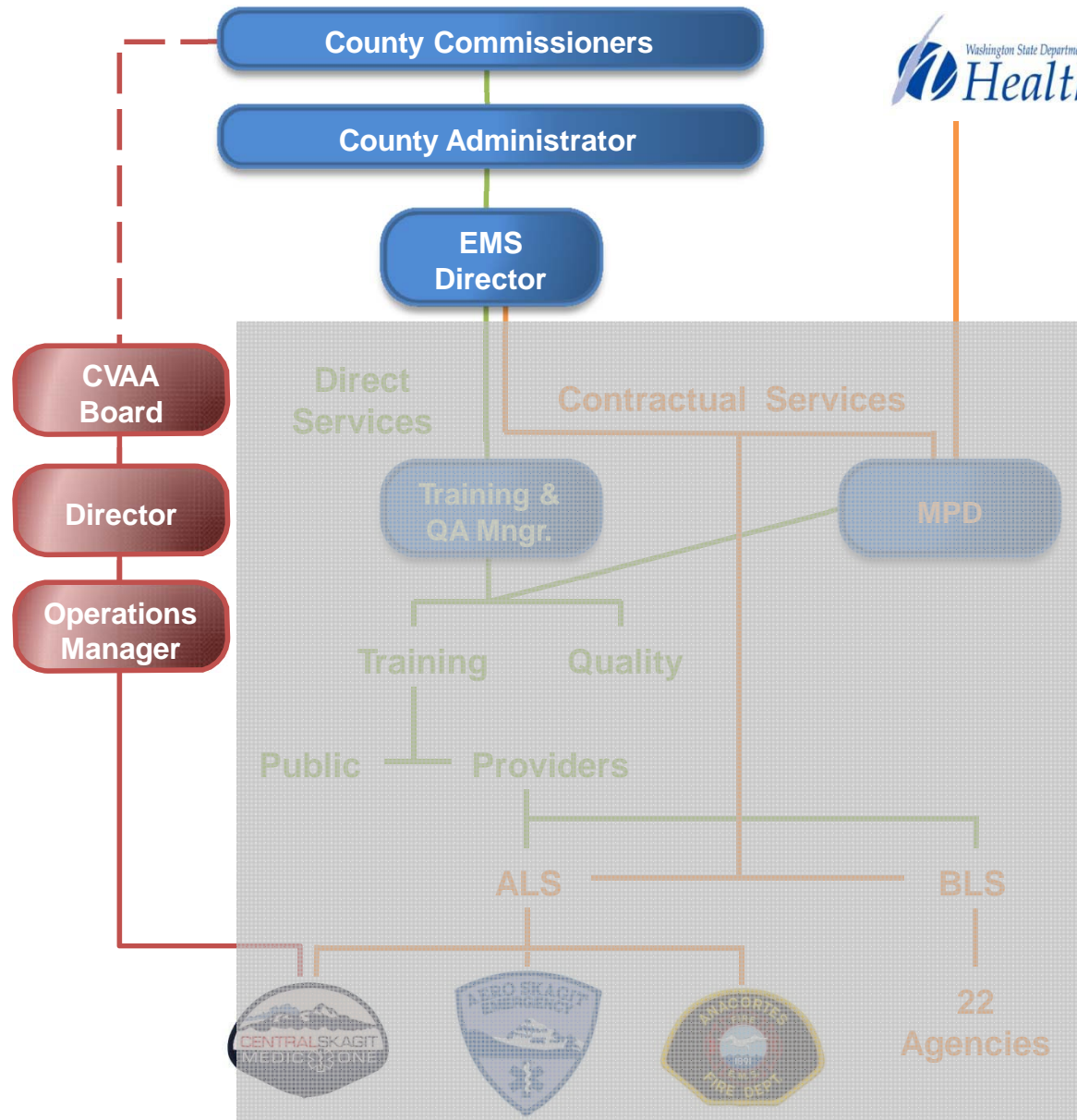
County EMS District

# Criteria

- Focused on patient care
- Fiscally sustainable/operationally efficient & accountable
- Provides stability & certainty to public, patients, employees & volunteers
- Makes service delivery & decision-making as simple as possible
- Makes decisions based on facts, information, and best practices
- Preserves volunteer & community based elements
- Fairly distributes shared revenues to provide equitable levels of service countywide
- Provides a framework of clear leadership & governmental oversight
- Flexible & adaptable to changing conditions
- Ease of implementation

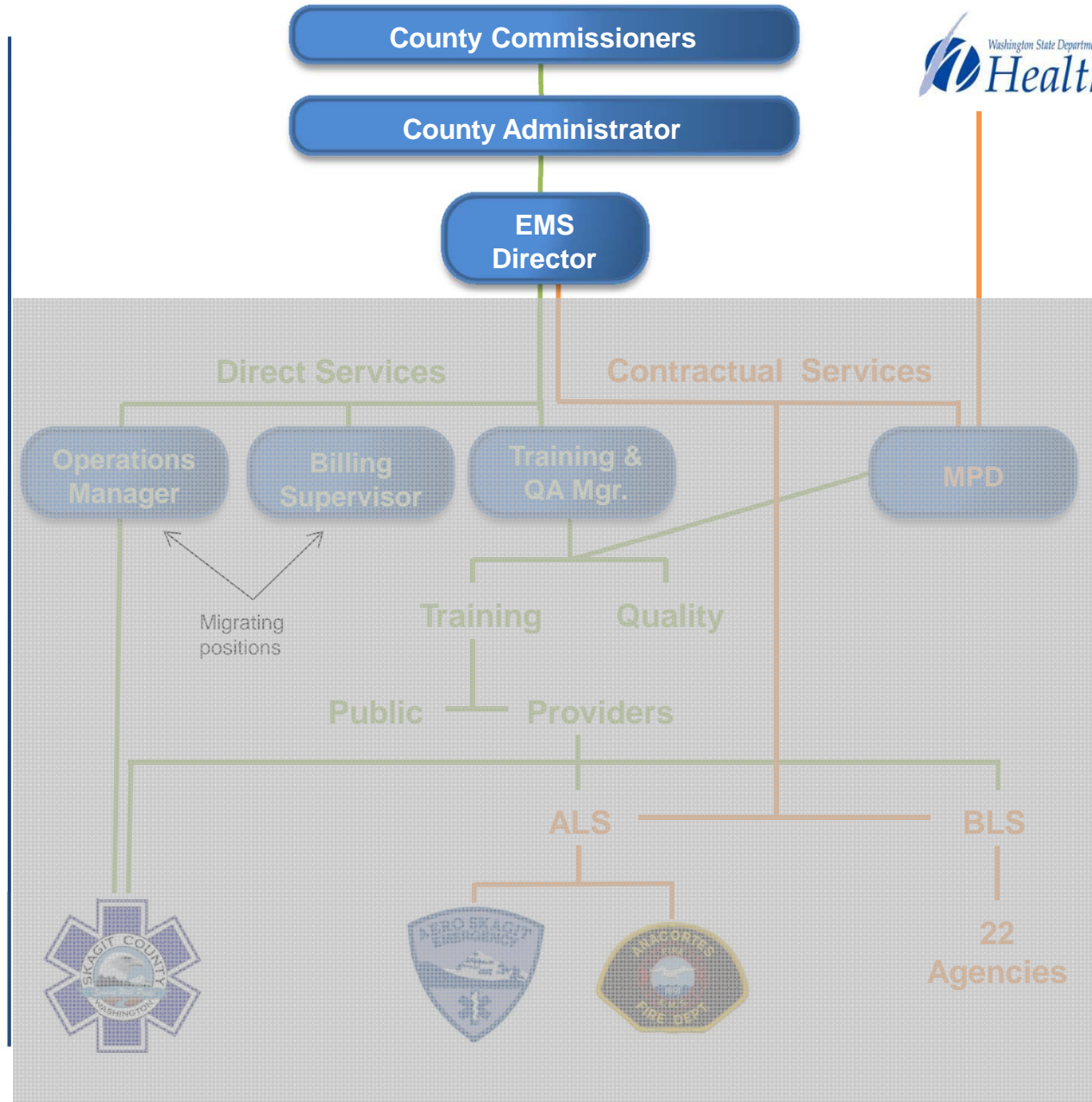
## Current Model – Ranked 5

1. County contracts for provision of EMS services.
2. ALS agencies each do their own in-house billing and utilizes the same third party billing service as designated by the County.
3. County Ordinance #O20090004 created CVAA; County Commissioners approve budgets, by-laws, and Board appointments.



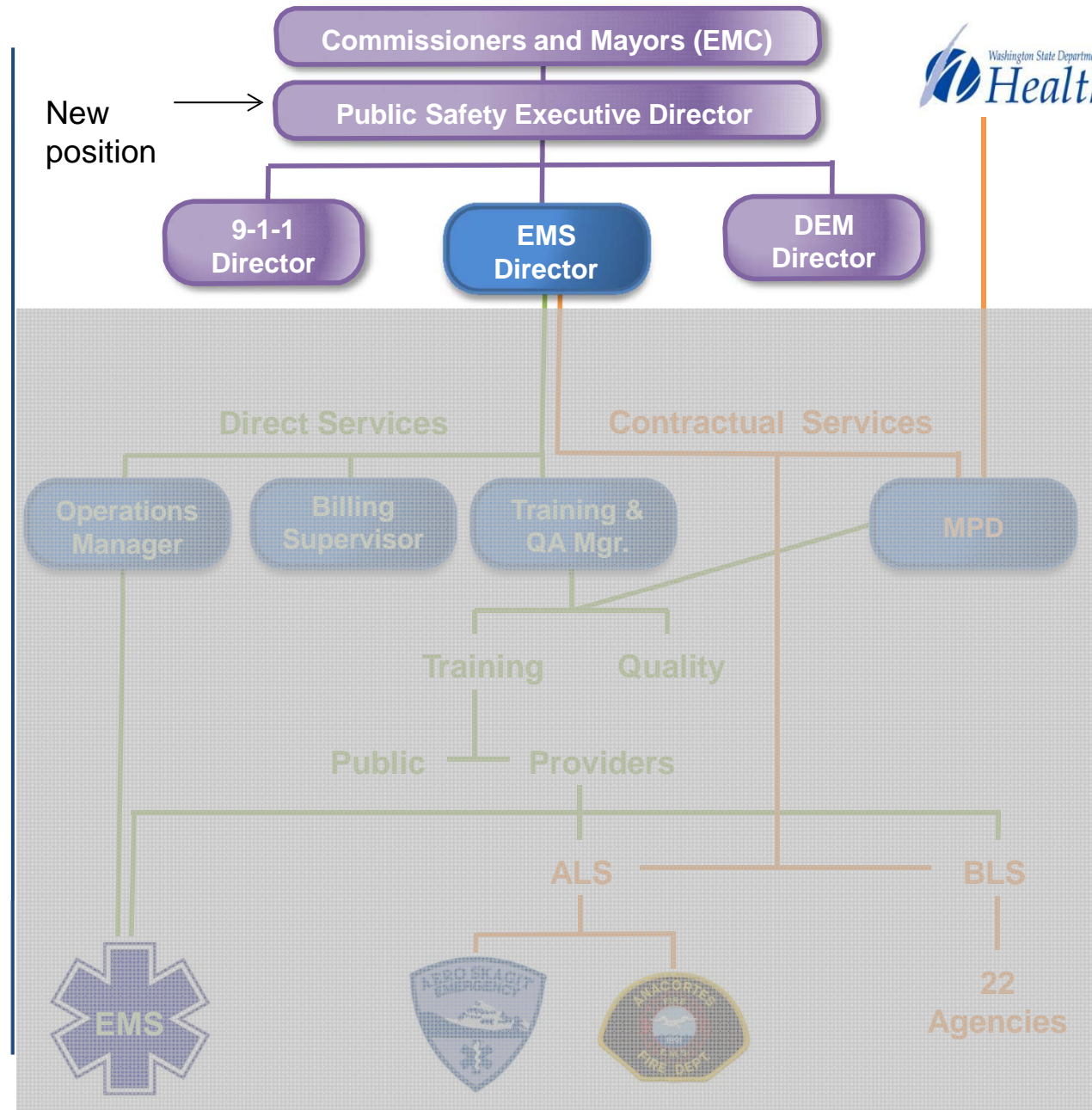
# County Department Model – Ranked 4

1. County provides billing services for all agencies.
2. County provides contracted & direct service
3. Training & QA centralized in County government



# Public Safety Model – Ranked 3

1. EMC becomes fiscal and policy oversight for 9-1-1, DEM and EMS.
2. County contractually transfers all EMS levy funds and revenues to EMC for EMS division funding.
3. EMC provides billing services for all agencies.
4. EMC provides direct service and/or contract out for entire County





# Regional Fire Authority – entire County Ranked 2

## RCW 52.36 Regional Fire Authorities

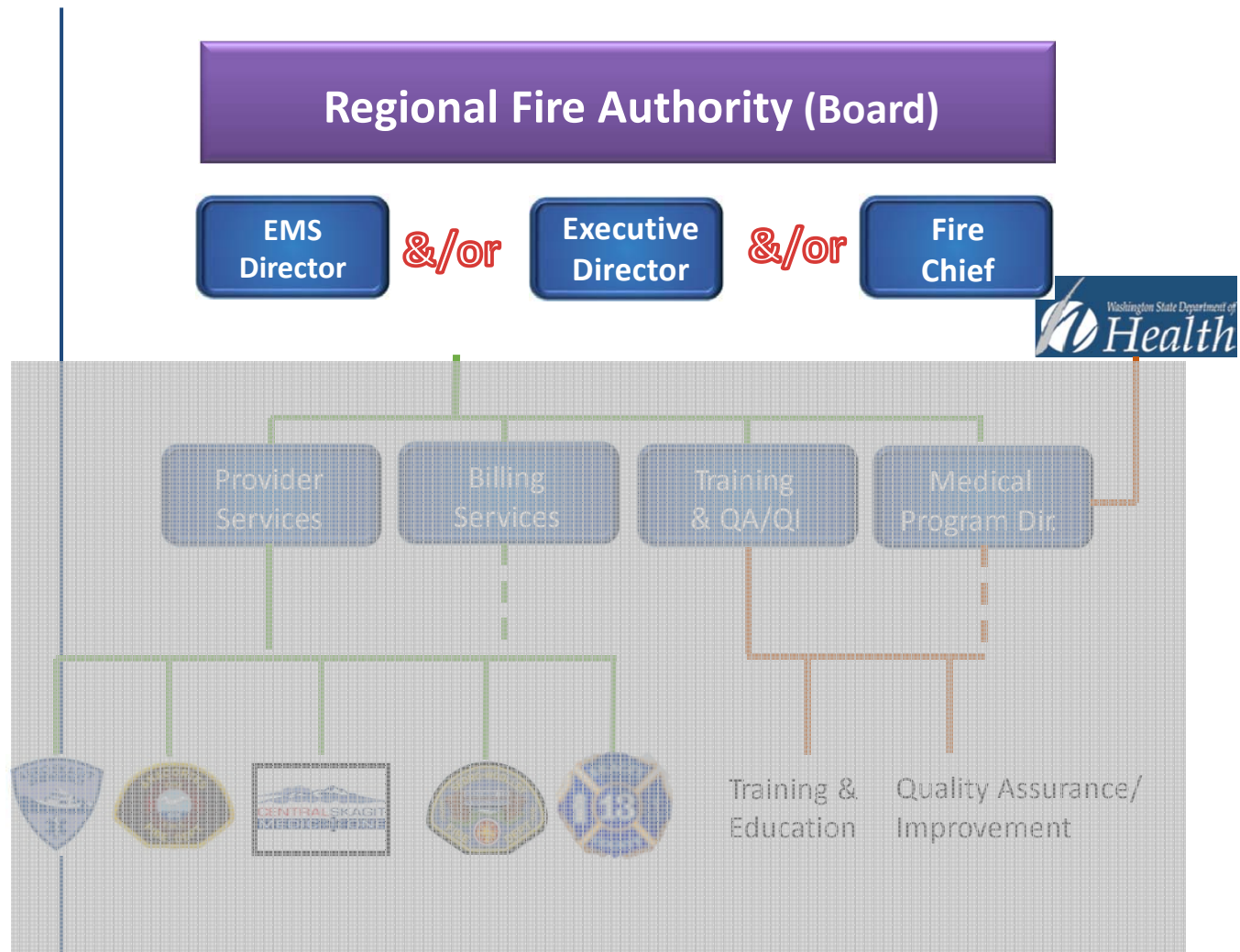
- Adjacent District/Cities Planning Committee Formulate Service Plan
- Voters Approve/Deny Plan

## Funding Options

- EMS Levy
- Regular Property Tax
- GO Bonds
- Benefit Charge
- LID's

## Governance Options

- 9 Member Board
- 6 Member Board
- Council Members
- Hybrid Mayor Council



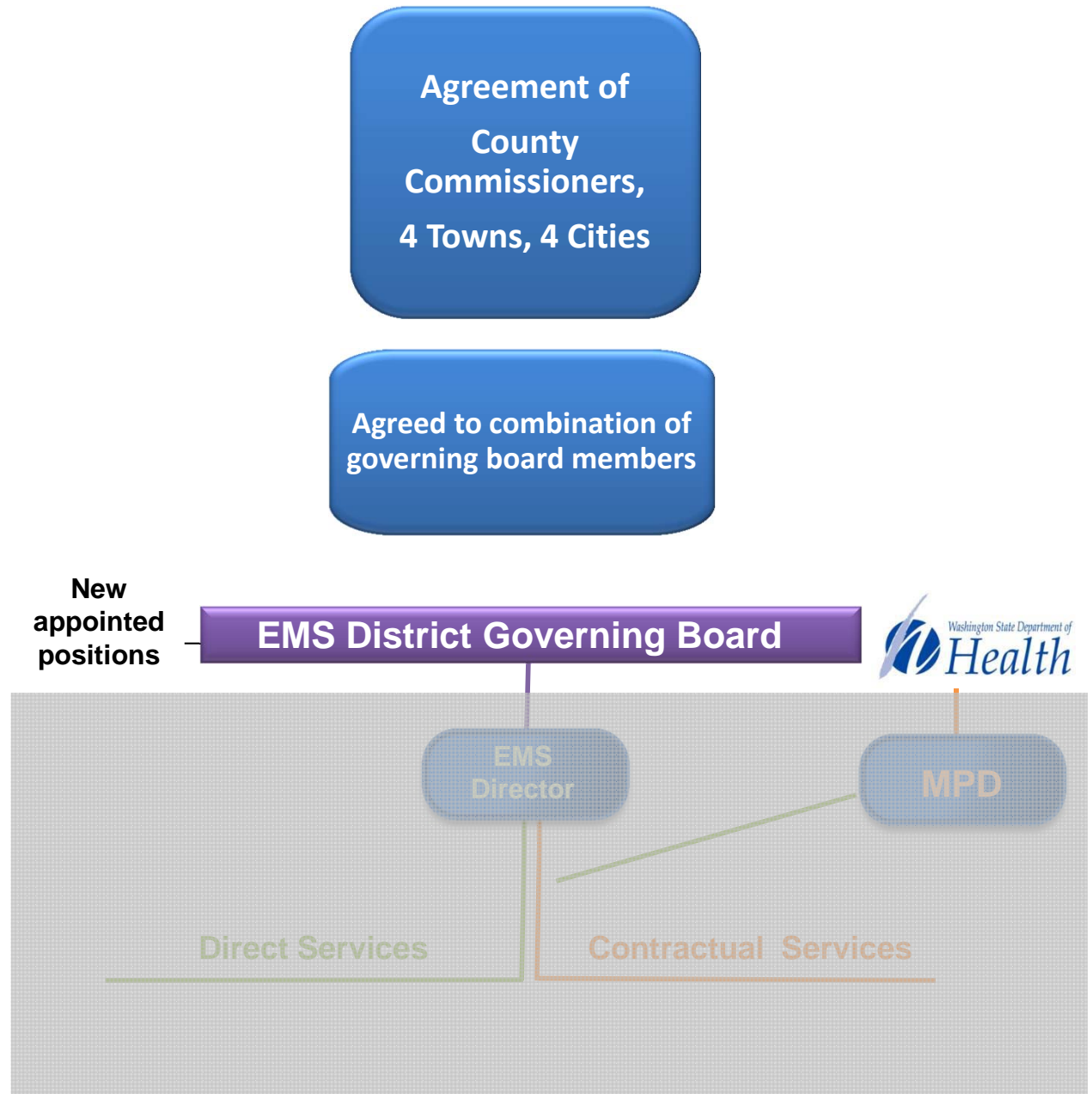
## EMS District Model Ranked 1

### RCW 36.32.480

- By Agreement All or part of the County
- Quasi Municipal Corporation
- Independent Taxing Authority Article VII, Section 1.
- Authority to provide EMS Services

### Funding Options

- All regular taxing means
- GEMT Qualified



# EMS District Model

RCW 36.32.480

1. Commissioners create District in agreement with Cities and Towns

2. EMS District collects EMS levy

3. EMS District provides billing services for all agencies

4. EMS District can provide direct and/or contracted services covering entire County

Negotiation

- County, Cities, Towns agree to pursue
- Legal experts & Labor experts
- Determine geographic area
- Governance structure - propose appointed board size and who appoints

Public Hearing

- Public input & official public hearing

County Commissioners action

- County, Cities, Towns adopt resolutions, inter-locals
- County adopts ordinance
- County transfers tax to EMS District

EMS District Governing Board

EMS Director